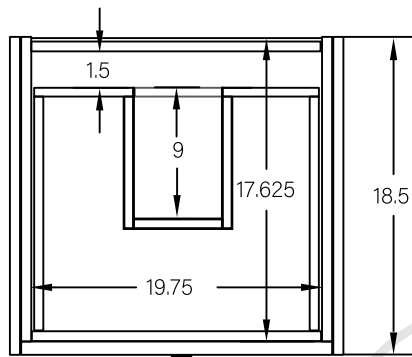
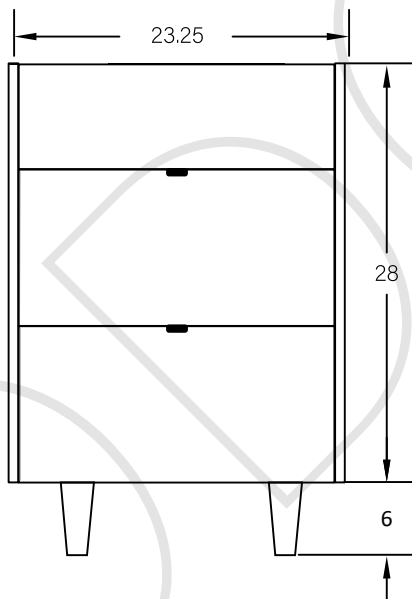


24" ASHBURY SLIM FREE STANDING VANITY

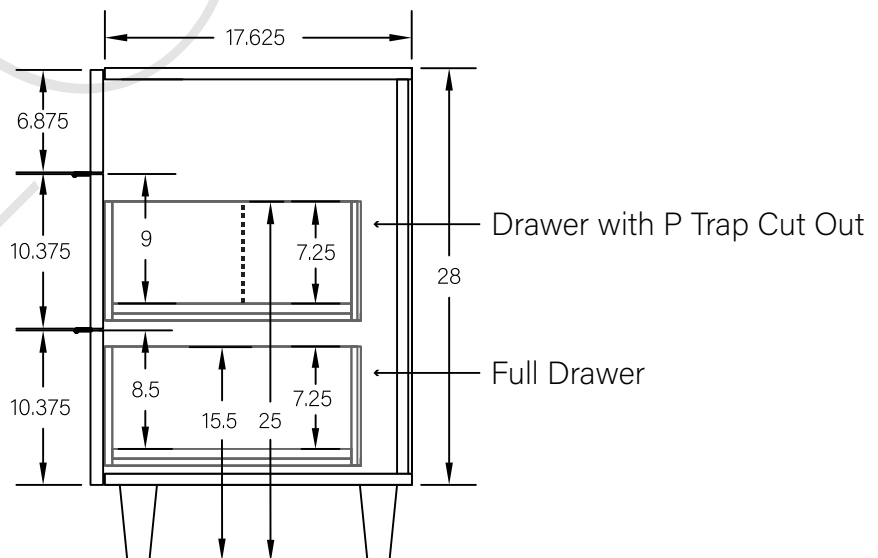
TOP VIEW



FRONT VIEW



SIDE VIEW

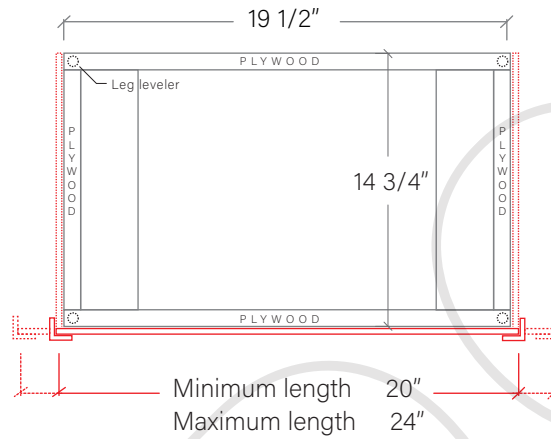




TEODOR

1-888-807-2323 | info@teodorvanities.com

24" SLIM TOE KICK

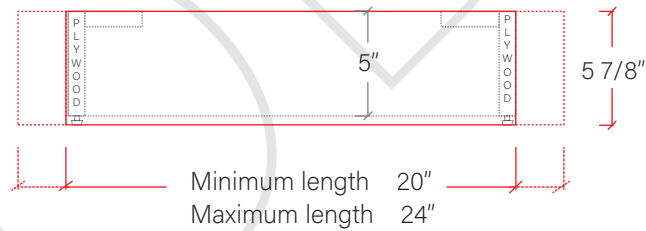
TOP VIEW



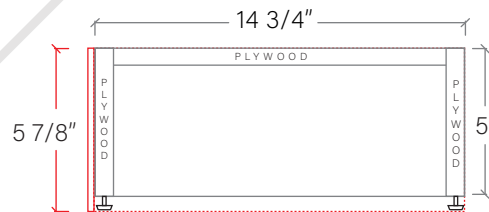
-  Finish piece (1/4" thick)
-  Plywood base (3/4" thick)

Side finish piece
installation is
optional

FRONT VIEW



SIDE VIEW



Leg levelers add 1/4" - 7/8"
to plywood base height

TEODOR

1-888-807-2323 | info@teodorvanities.com