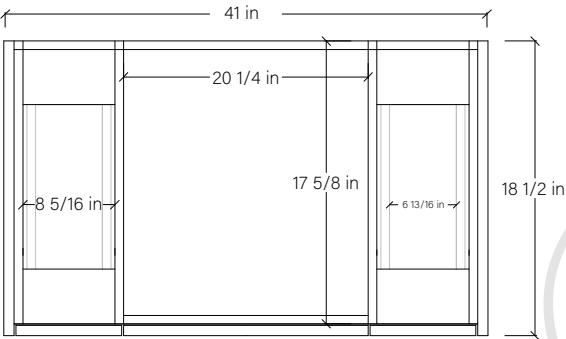


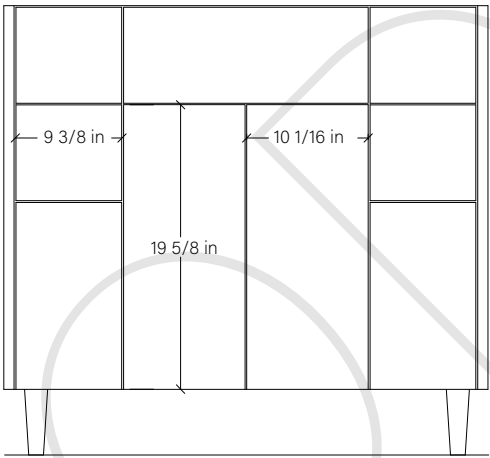
# 42" AUSTIN SLIM FREE STANDING VANITY



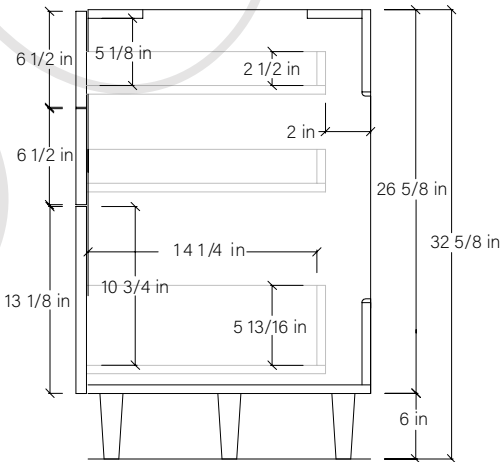
TOP VIEW



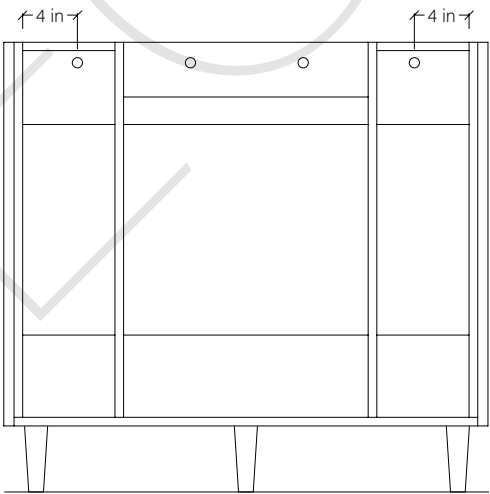
FRONT VIEW



SIDE VIEW



INSIDE BACK VIEW





← Secure vanity to studs within 4" from side gables.

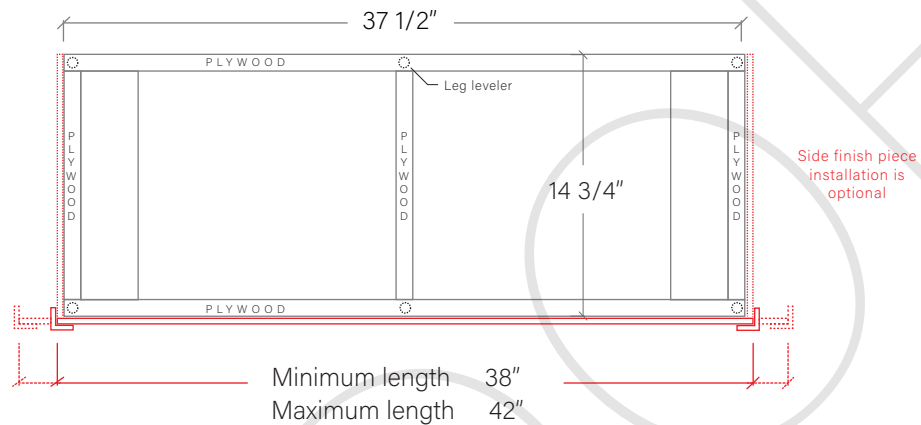
TEODOR

1-888-807-2323 | info@teodorvanities.com

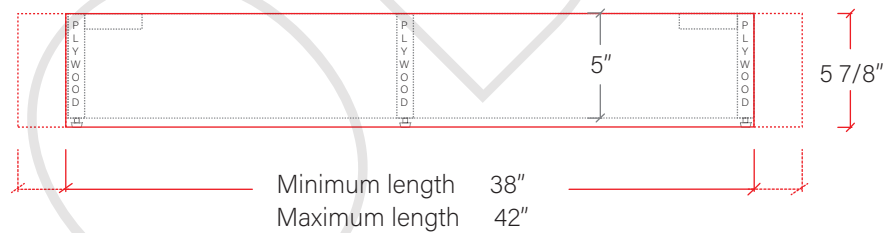
# 42" SLIM TOE KICK

-  Finish piece (1/4" thick)
-  Plywood base (3/4" thick)

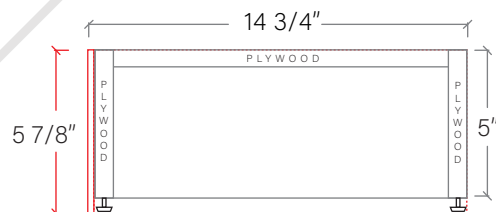
TOP VIEW



FRONT VIEW



SIDE VIEW



Leg levelers add 1/4" - 7/8"  
to plywood base height

# TEODOR

1-888-807-2323 | [info@teodorvanities.com](mailto:info@teodorvanities.com)